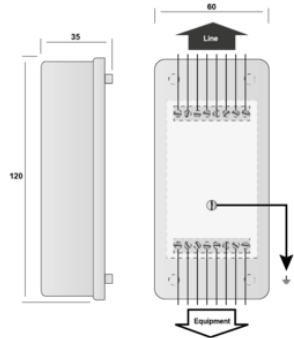


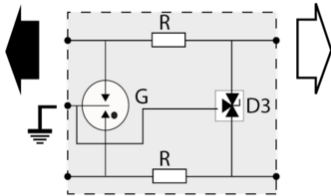
B280-24D3



- ↳ 2-pair surge protection unit
- ↳ 24 V
- ↳ Removable protection circuit
- ↳ Wall mounting and screw connection
- ↳ UL497 A&B



	Electrical Characteristics	
	Network	LS, 4-20 mA
Nominal line voltage	Un	24 V
Max. DC operating voltage	Uc	28 Vdc
Max. frequency	f max.	> 3 MHz
Insertion loss		< 1 dB
Max. discharge current max. withstand @ 8/20 µs by pole	Imax	20 kA
Protection mode(s)		Common/Differential mode
Protection levelFollowing the test category C3 (IEC61643-21) - Line/Line	Up	40 V
Protection levelFollowing the test category C3 (IEC61643-21) - Line/PE	Up	20 V
Line resistance		< 4.7 Ohm
Mechanical Characteristics		
Technology		GDT+Clamping diode
SPD configuration		2 pairs
Connection to Network		By screw terminal: cross section 0.4-1.5mm ²
Format		Wall mounting box
Mounting		Wall mounting by screws (not supplied)
Housing material		Thermoplastic UL94 V-0
Operating temperature	Tu	-40/+85°C
Protection rating		IP20
Failsafe mode		Short-circuit - transmission cut-off - fault mode 2
Spare module(s)		S280-24D3
Dimensions		See diagram
Standards		
Standards compliance		IEC 61643-21 / EN 61643-21 / UL497A
Certification		UL listed
Part number		
		72773



G: 3-electrode gas tube
R: Resistor
D3: 3-pole clamping diode