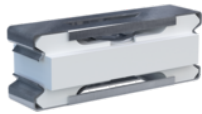
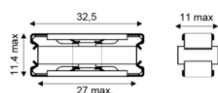


CA8BB 250/12



- ↳ 2-electrode GDT
- ↳ In compliance with international standards
- ↳ No radioactive
- ↳ Utilisable sur support à couteaux



Electrical Characteristics	
DC sparkover voltage (100V/s)	220-280 V
DC spark voltage tolerance	+/- 12%
Maximum impulse sparkover voltage (1kV/μs)	<700V
Follow current	If Yes
Nominal discharge current 15 x 8/20 μs impulses	In 10 kA
Total Maximum discharge current max. total withstand @ 8 /20 μs	Imax Total 25 kA
Max. capacitance	C <10 pF
Insulation resistance	IR >1 GOhms
AC discharge current (50Hz)	20 A
DC Holdover voltage R = 300 ohms in serie R = 150 ohms; 100nF en parrallel	> 72 V
Mechanical Characteristics	
Technology	Gas discharge tube
Mounting	Slide bracket
Dimensions	See diagram
Standards	
Standards compliance	UIT-T-K12 rec. / IEC 61643-11 / IEC 61643-311
Part number	
95772	

Note: NQA Niveau II 0,65, ISO DIN 2859

