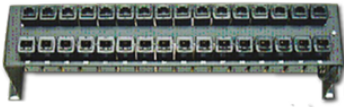


RAK16-POE-B-SO



- 19" patch panel surge protector for POE-B
- 16 ports
- In/Out front : RJ45
- Maintenance possible per port
- Secondary Protection
- UL497B



Electrical Characteristics		
Network		POE mode B, Gigabit Ethernet, POE Plus
Nominal line voltage	Un	5 Vdc/48 Vdc
Max. DC operating voltage	Uc	Pin 1.2.3.6 : 7.5Vdc - Pin 4.5.7.8 : 60 Vdc
Max. frequency	f max.	250 MHz
Max. data rate		10/100/1000 Mbps
Insertion loss		< 1 dB
Max. load current	IL	750 mA
Protection levelFollowing the test category C3 (IEC61643-21) - Line/Line	Up	20V/80 V
Max. capacitance	C	< 25 pF (ligne ethernet)
Discharge current at 10/1000µs impulse current		130 A/50 A
Line/Line Nominal discharge current C2 Category	In L/L	600 A/250 A
Line/Ground Nominal discharge current 8 /20µs Test x 10 - C2 Category	In L/PE	600 A/250 A
Mechanical Characteristics		
Technology		Diode écrêtage
SPD configuration		16 ports of 8 wires
Connection to Network		RJ45 Female input/output
Format		Rack 19"
Mounting		19" rack or wall
Housing material		Aluminium
Operating temperature	Tu	-40/+85°C
Protection rating		IP20
Outdoor application		No
Failsafe mode		Short-circuit
Disconnection indicator		Transmission interrupt
Spare module(s)		1-port removable circuit
Remote signaling of disconnection		No
Pinout		(1-2)(3-6)(4-5)(7-8)
Dimensions		See diagram
Standards		
Standards compliance		IEC 61643-21 / EN 61643-21 / UL497B / IEEE 802-3at
Part number		
6285		